



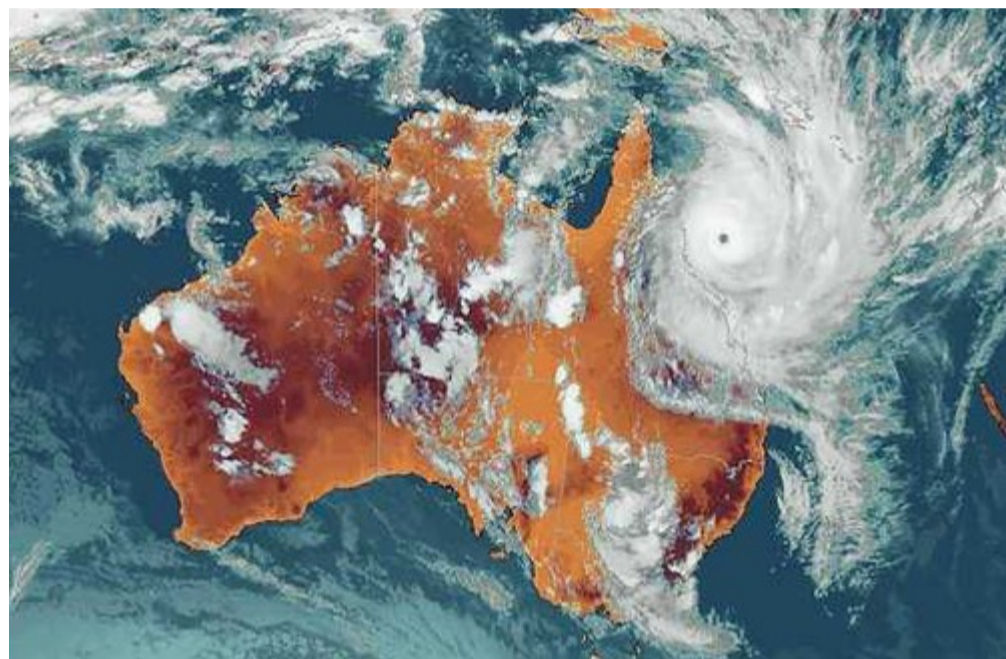
The  
Steel  
Framing  
Company

your home  
1300 63 2266

## CYCLONES

### 2011 - CYCLONE YASI (Category 5)

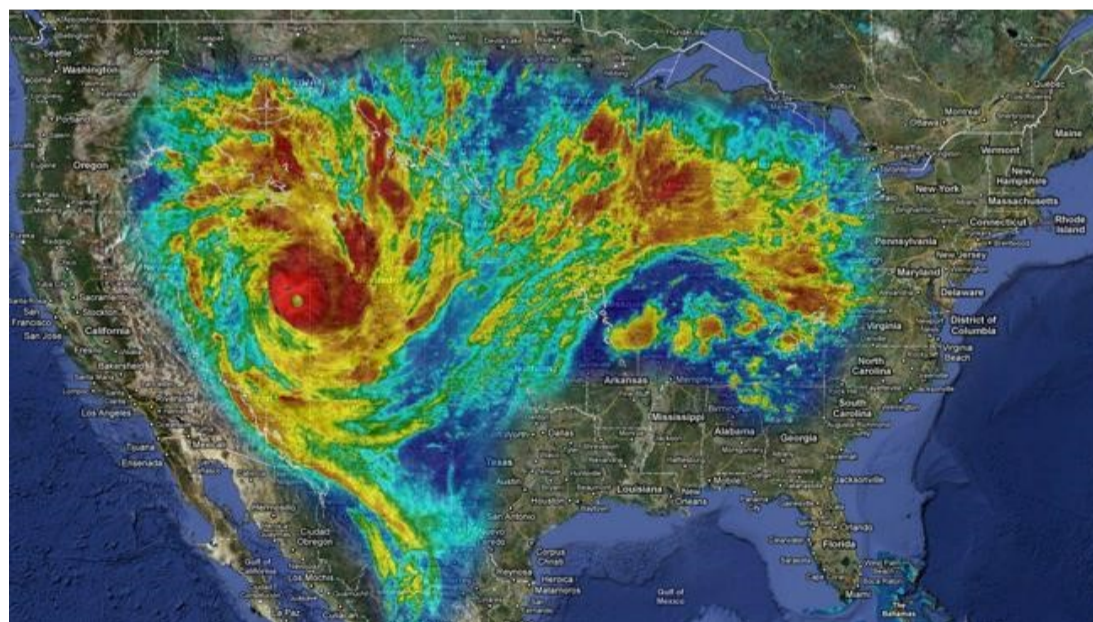
Cyclone Yasi crossed the Queensland coast at Mission Beach and Tully, south of Cairns. It is the worst cyclone to hit Australia since 1918, with 290 km/h winds.



Hurricane Yasi is vast in this satellite image as it bears down on the Qld coast

## HOW CYCLONE YASI COMPARES AROUND THE WORLD

Yasi - it's bigger than Larry and more powerful than Tracy. Hours after landfall, it was still a category three and was still a category two and category one cyclone hundreds of kilometres inland.



A map showing Tropical Cyclone Yasi superimposed over the USA

WHERE DOES TSFC FIT INTO THIS EQUATION?

[www.tsfc.com.au](http://www.tsfc.com.au) | [sales@tsfc.com.au](mailto:sales@tsfc.com.au)

In the Bega valley, NSW



The  
Steel  
Framing  
Company

your home  
1300 63 2266

ABN 37 124 102 370

## CYCLONES

Our TSFC home (pictured right) was built in Silkwood, QLD in late 2010. Cyclone Yasi which hit the Queensland coast in February 2011 passed directly over Silkwood. This home went through the EYE of cyclone Yasi.

Cyclone Yasi is the most severe cyclone Australia has seen in a century.

What does this mean?

Well, when a home encounters a cyclone the engineering specifications of that home is tested. However, we need to remember that after the eye passes over and test 1 has been completed, the other side of the cyclone hits.



Once the cyclone passes over, the wind blows with equal strength BUT in the opposite direction. The extreme forces of over 280km/hr winds tested the house first clockwise... then anti-clockwise testing our engineering to the maximum.

**Whilst devastation occurred around this home, this TSFC steel frame kit home came through unscathed – it didn't even lose a roofing screw.**

The most amazing fact about this occurrence is that our TSFC home was only engineered for category 2 (C2) cyclonic conditions. Our engineering is top quality and our 90mm lipped 'C' section with a 12mm lip is much stronger than any 'U' section stud and plate framing. Our now 'standard' truss that spans the entire width of the house and verandah also adds to the strength of the home. The strength of our homes increases with our commitment to continual improvement and the fact that we do not cut corners.

This home in Silkwood Qld, has definitely withstood the test of Cyclone Yasi (C5). The owners were indeed very happy to say the least.

**At TSFC we do NOT work to minimum specifications.**

**At TSFC we do NOT compromise on our customer's safety to save a few dollars.**

**OUR FOCUS IS ON QUALITY, STRENGTH AND SAFETY.**

**You can be assured that buying your home from The Steel Framing Company Pty Ltd is an excellent investment.**

**CALL US NOW ON...**

**PH: 1300 63 2266 OR**

**EMAIL: [SALES@TSFC.COM.AU](mailto:SALES@TSFC.COM.AU)**

[www.tsfc.com.au](http://www.tsfc.com.au) | [sales@tsfc.com.au](mailto:sales@tsfc.com.au)

In the Bega valley, NSW



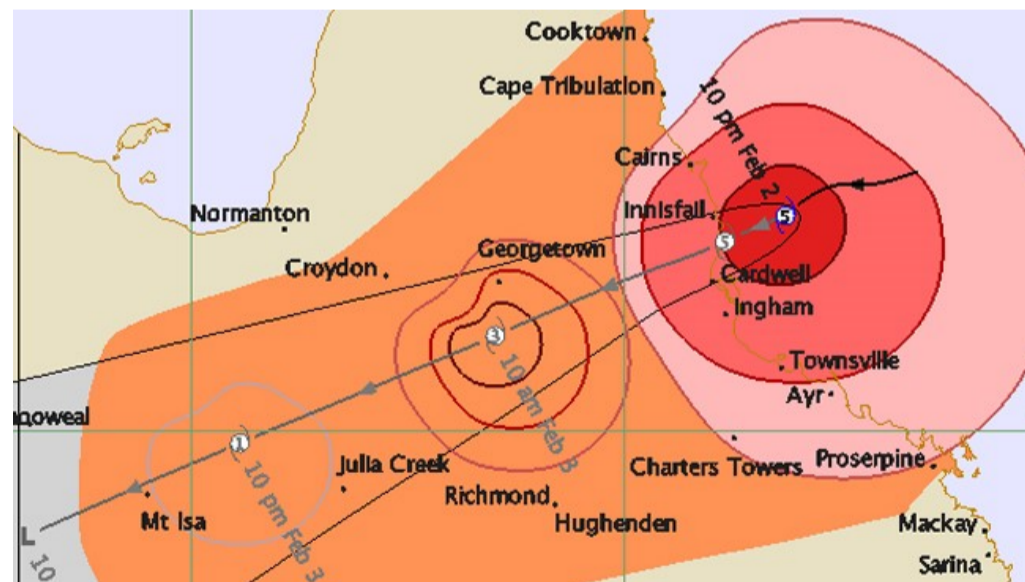
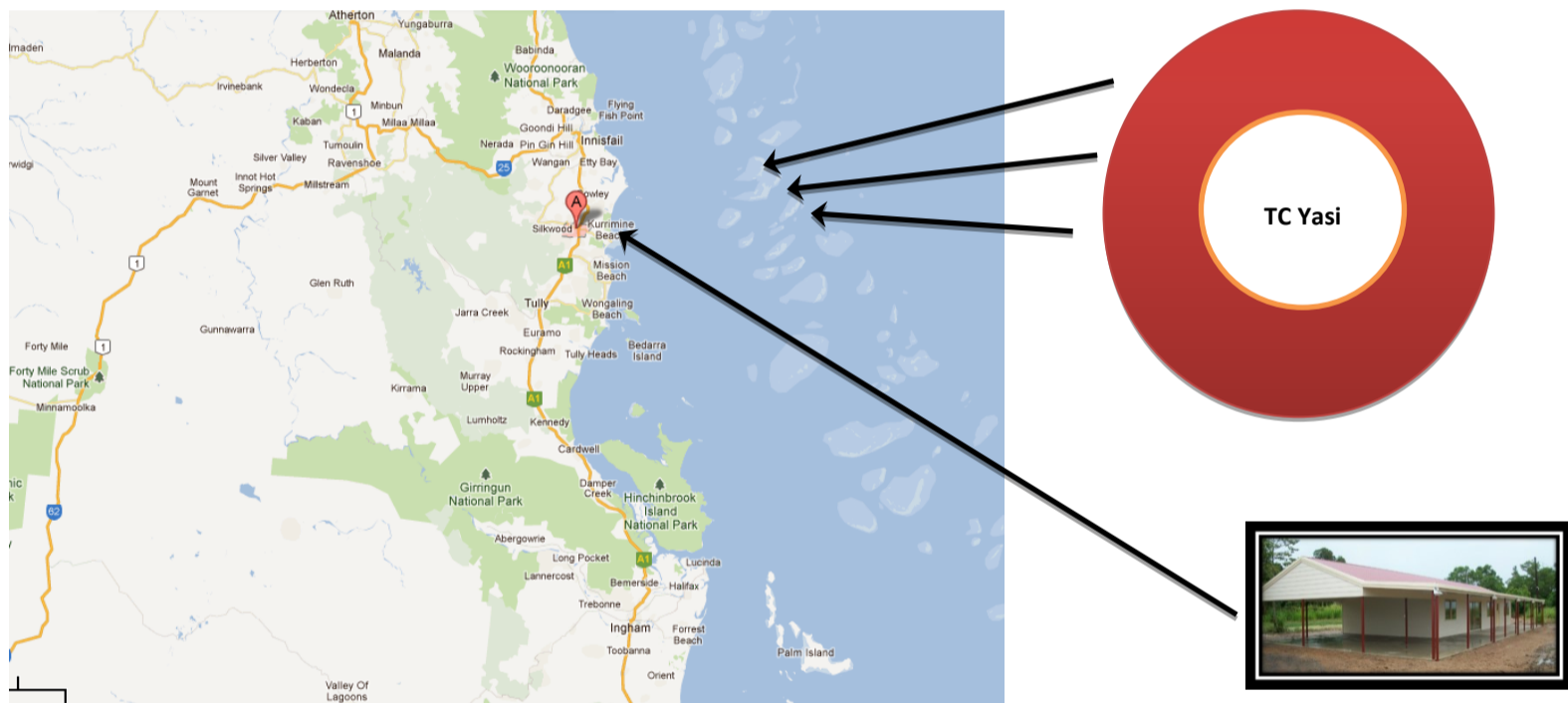
The  
Steel  
Framing  
Company

your home  
1300 63 2266

ABN 37 124 102 370

## CYCLONES

Cyclone severity categories	Category Wind Strength (Max gust in km/hr)	Wind Strength (Max gust in m/s)	Damage Potential
1	Gale 90 - 124	25 - 34	Minimal
2	Storm 125 - 164	35 - 45	Moderate
3	Hurricane 165 - 224	46 - 62	Major
4	Hurricane 225 - 279	63 - 78	Devastating
5	Hurricane >280	> 78	Extreme



## THE PATH OF CYCLONE YASI (2011)

[www.tsfc.com.au](http://www.tsfc.com.au) | [sales@tsfc.com.au](mailto:sales@tsfc.com.au)

In the Bega valley, NSW